

***Leptodus* and *Spiriferella* (Permian Brachiopoda) from the Usuginu Conglomerate, southern Kitakami Mountains, northeast Japan**

Jun-ichi TAZAWA*

Abstract

Two Permian brachiopod species, *Leptodus* sp. and *Spiriferella keilhavii* are described from a sandstone block of the Usuginu Conglomerate in the Ichinoseki district, southern Kitakami Mountains, northeast Japan. The occurrence of a Tethyan-type brachiopod *Leptodus* together with a Boreal-type brachiopod *Spiriferella* suggests that the source area of the the Usuginu Conglomerate was probably a continental shelf bordering the eastern margin of the Sino-Korean Continent in Middle Permian time.

Key words: Brachiopods, *Leptodus*, Permian, southern Kitakami Mountains, *Spiriferella*, Usuginu Conglomerate.

Introduction

The brachiopods described below were collected from a sandstone block of the upper part of the Usuginu Conglomerate in Fujinosawa, about 6 km east of Ichinoseki, southern Kitakami Mountains, northeast Japan (Fig. 1). Geology of the Ichinoseki district, especially stratigraphy and sedimentary facies of the Usuginu Conglomerate, was described in detail by Yoshida and Machiyama (1998). According to them, the Usuginu Conglomerate is about 1,500 m in total thickness, and the upper part is characterized by bearing many large blocks of sandstone, mudstone and limestone. The sandstone block containing brachiopod fossils is 120 cm × 60 cm in size, and consists of dark grey, fine-grained calcareous sandstone. The brachiopod specimens are relatively well preserved, and identified to *Leptodus* sp. and *Spiriferella keilhavii* (von Buch, 1846). The latter one indicates Middle Permian (Bolorian-Midian) age (Waterhouse and Waddington, 1982).

The purpose of this paper is to describe the Middle Permian brachiopods from the sandstone block of the Usuginu Conglomerate in the Ichinoseki district, and to discuss the palaeogeography of the source area of this conglomerate. The fossils are registered in the collection of the Department of Geology, Faculty of Science, Niigata University as specimens NU-B185-NU-B190.

* Department of Geology, Faculty of Science, Niigata University, Niigata 950-2181, Japan.
(Manuscript received 7 October, 1998; accepted 7 January, 1999)

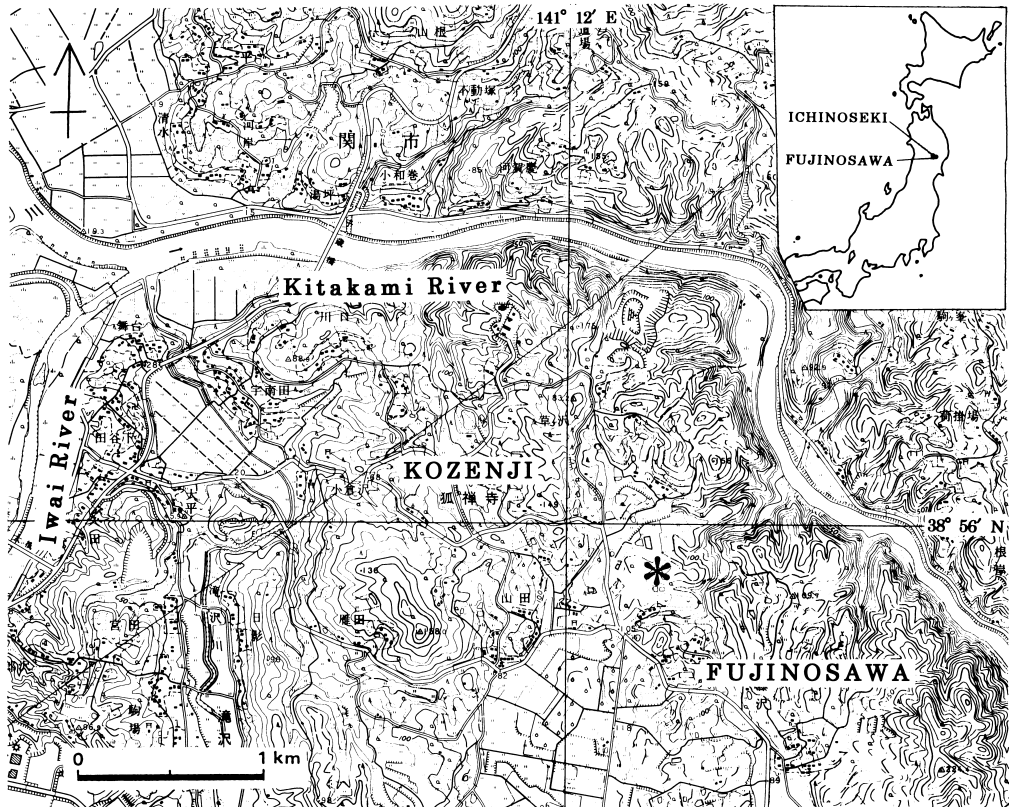


Fig. 1. Map showing the fossil locality (asterisk). Using the topographical map of "Ichinoseki" scale 1:25,000 published by Geographical Survey Institution of Japan.

Age of the Usuginu Conglomerate

The age of the Usuginu Conglomerate is considered biostratigraphically and sedimentologically to be early Late Permian (Dzhulfian), although the previous authors (Ehiro, 1989; Yoshida and Machiyama, 1998) regarded as late Middle Permian. In the Ichinoseki district, the Usuginu Conglomerate overlies the Lower Permian Nozuchi Formation, and is in turn overlain conformably by the Upper Permian Toyoma Formation (Osawa *et al.*, 1981; Yoshida and Machiyama, 1998). The Middle Permian sequence was eroded away completely, and not preserved in this district. Some fusulinaceans and rugose corals, such as *Lepidolina*, *Rauserella*, *Wentzelella* and *Wentzelloides*, which occur commonly from the upper Kanokura Formation (Iwaizaki Stage of Minato *et al.*, 1978; correlated with the Midian) of the southern Kitakami Mountains, were found from limestone blocks and mudstone matrix of the Usuginu Conglomerate (Machiyama and

Yoshida, 1995; Yoshida and Machiyama, 1998). However, the sole specimen of *Lepidolina multiseptata* (Deprat), collected and figured by Yoshida and Machiyama (1998, fig. 5A) from the mudstone matrix is fragmental, and it appears to be a derived fossil. Consequently these above-cited fossils are inadequate to use for indicator of the Usuginu Conglomerate age. The age of this conglomerate must be later than late Middle Permian, and it is probable early Late Permian (Dzhulfian).

Source area of the Usuginu Conglomerate

Leptodus is a typical Tethyan-type brachiopod genus, and is distributed in the Lower Permian (Sakmarian) to Upper Permian (Dorashamian) of the Tethyan, and its neighbouring regions: Hungary (Schréter, 1963), Croatia (Sremac, 1986), Serbia (Simic, 1933), Transcaucasia (Licharew, 1932; Sarytcheva, 1964; Ruzhentsev and Sarytcheva, 1965; Kotljar in Kotljar and Zakharov., 1989), Pamir (Tschernyschew, 1914; Grunt and Dmitriev, 1973), Salt Range (Waagen, 1883; Noetling, 1904, 1905; Frech, 1911; Fredericks, 1916; Reed, 1944; Cooper and Grant, 1974), Khisor Range (Grant, 1970) and Surghar Range (Grant, 1970) in Pakistan, Kashmir (Diener, 1899, 1915), Kumaon Himalayas (Diener, 1897), Tibet (Jing and Sun, 1981; Zhan and Wu, 1982), southern Thailand (Grant, 1976; Waterhouse and Piyasin, 1970; Yanagida, 1970), Cambodia (Mansuy, 1913, 1914; Termier and Termier, 1960; Chi-Thuan, 1961), Laos (Mansuy, 1912), Vietnam (Colani, 1919; Chi-Thuan, 1962), Timor (Hamlet, 1928; Wanner and Sieverts, 1935), Port Keats in northern Australia (Thomas, 1957), Yunnan (Huang, 1936; Fang and Fan, 1994), Sichuan (Hayasaka, 1917, 1922b; Huang, 1932; Tong, 1978; Xu, 1987; Shen *et al.*, 1992), Guizhou (Hayasaka, 1917, 1922b; Huang, 1932; Feng and Jiang, 1978; Liao, 1980), Guangxi (Hayasaka, 1922b; Huang, 1933, 1936; Yang *et al.*, 1977), Guangdong (Yang *et al.*, 1977; Zhan, 1979), Hunan (Yang *et al.*, 1977; Liu *et al.*, 1982; Liao and Meng, 1986) and Hubei (Yang *et al.*, 1977; Yang, 1984) in South China, Jiangxi (Kayser, 1883; Frech, 1911; Hayasaka, 1922b; Huang, 1932; Wang *et al.*, 1982), Fujian (Wang *et al.*, 1982; Xu, 1987; Zhu, 1990), Zhejiang (Wang *et al.*, 1982; Liang, 1990) and Anhui (Jing and Hu, 1978; Wang *et al.*, 1982) in East China, Shaanxi (Zhang, 1996), Gansu (Zhang *et al.*, 1983) and Qinghai (Jin *et al.*, 1979) in Northwest China, Inner Mongolia (Grabau, 1931; Lee and Gu, 1976; Lee *et al.*, 1980; Duan and Li, 1985), Heilongjiang (Lee *et al.*, 1980) and Jilin (Lee *et al.*, 1980) in Northeast China, South Primorye in eastern Russia (Licharew and Kotljar, 1978; Kotljar in Kotljar and Zakharov, 1989), and South Kitakami Belt (Yabe, 1900; Hayasaka, 1917, 1922a, 1960; Tazawa, 1976, 1987; Minato *et al.*, 1979), Hida Gaien Belt (Tazawa, 1987; Tazawa and Matsumoto, 1998), Maizuru Belt (Mashiko, 1934; Shimizu, 1961) and Akiyoshi Belt (Yanagida, 1996) in Japan.

On the other hand, *Spiriferella keilhavii* is a Boreal-type brachiopod species, and is distributed in the Middle Permian (Bolorian-Midian) of the Boreal region and transitional (boundary) zone between the Boreal and Tetyan regions: Yukon Territory (Nelson and Johnson, 1968; Bamber and Waterhouse, 1971), Devon Island (Harker, 1960) and Ellesmere Island (Waterhouse and Waddington, 1982) in Arctic Canada, Greenland (Frebald, 1931; Dunbar, 1955), Spitsbergen (Wiman, 1914; Frebold, 1937; Stepanov, 1937; Gobbett, 1963) and Bear Island (von Buch, 1846;

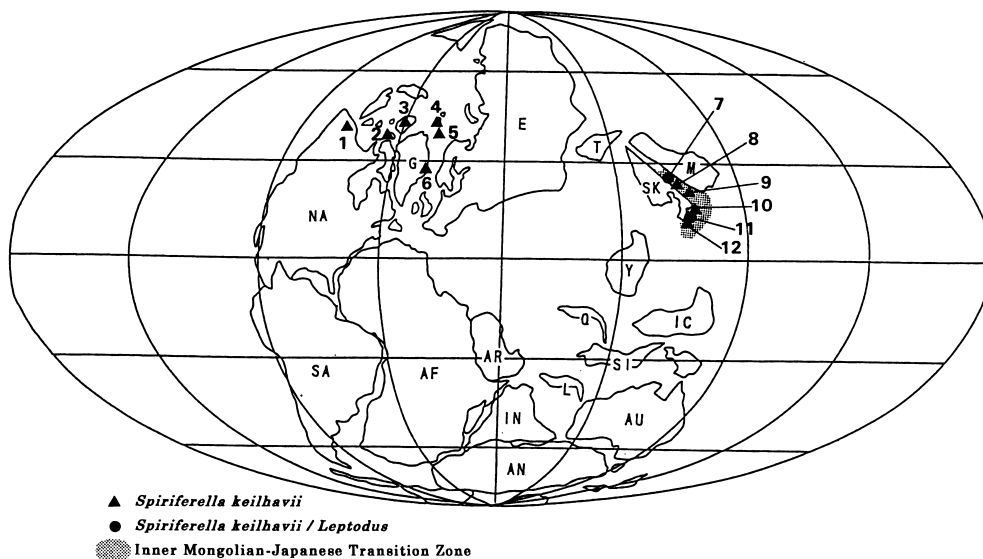


Fig. 2. Geographical distribution of *Spiriferella keilhavii* with/ without *Leptodus* in Middle Permian (adapted from Ziegler *et al.*, 1996). 1: northern Yukon Territory, 2: Devon Island, 3: Ellesmere Island, 4: Spitsbergen, 5: Bear Island, 6: east Greenland, 7: Jisu, Inner Mongolia, 8: Xiujimqin and Ongniud, Inner Mongolia, 9: Acheng, Heilongjiang, 10: Mizukoshi, central Kyushu, 11: southern Kitakami Mountains, 12: Abukuma Mountains, AF: Africa, AN: Antarctica, AR: Arabia, AU: Australia, E: Eurasia, G: Greenland, IC: Indochina, IN: India, L: Lhasa, M: Mongolia, NA: North America, Q: Qangtang, SA: South America, SI: Sibumasu, SK: Sino-Korea, T: Tarim, Y: Yangtze.

Wiman, 1914) in Svalbard, Jisu (Grabau, 1931), Xi Ujimqin (Lee *et al.*, 1985) and Ongniud (Lee *et al.*, 1980) in Inner Mongolia, Heilongjiang (Lee *et al.*, 1980) in Northeast China, and South Kitakami Belt (Koizumi, 1979; Minato *et al.*, 1979; Tazawa and Gunji, 1982) and Mizukoshi of Hida Gaien Belt (Yanagida, 1963) in Japan (Fig. 2).

The areas having both *S. keilhavii* and *Leptodus* species are restricted geographically to a transitional zone (or boundary zone) between the Tethyan and Boreal Realms in east Asia, i.e., the Inner Mongolian-Japanese Transition Zone of Tazawa (1991), which includes Inner Mongolia, Northeast China, South Primorye and the South Kitakami and Hida Gaien Belts in Japan (Fig. 2). The Ichinoseki district belongs to this transitional zone. The source area of the Usuginu Conglomerate was probably a part of a continental shelf along the eastern margin of the Sino-Korean Continent in Middle Permian time, similar to the other districts in the Inner Mongolian-Japanese Transition Zone (Tazawa, 1991, 1992, 1996, 1997).

Description of Species

Order Productida Waagen, 1883

Suborder Strophalosiidina Waagen, 1883
Superfamily Lyttonioidea Waagen, 1883
Family Lyttoniidae Waagen, 1883
Subfamily Lyttoniinae Waagen, 1883
Genus *Leptodus* Kayser, 1883

Leptodus sp.

Pl. 1, figs. 1a, 1b.

Material.—One specimen, internal mould of a pedicle valve, NU-B190.

Remarks.—This specimen is safely assigned to the genus *Leptodus* by having 3 to 5 regularly and symmetrically arranged, broad and solid lateral septa on each side of the median septum. The Ichinoseki specimen is small in size (length 18 mm, width 17 mm), and it may be a young shell of *Leptodus nobilis* (Waagen, 1883), which occurs commonly in the Middle Permian Kanokura Formation of the southern Kitakami Mountains (Hayasaka, 1917, 1922a, 1960; Tazawa, 1976, 1987; Minato *et al.*, 1979). But specific identification is difficult on such a young specimen.

Order Spiriferida Waagen, 1883
Suborder Spiriferidina Waagen, 1883
Superfamily Spiriferoidea King, 1846
Family Spiriferellidae Waterhouse, 1968
Subfamily Spiriferellinae Waterhouse, 1968
Genus *Spiriferella* Tschernyschew, 1902

Spiriferella keilhavii (von Buch, 1846)

Pl. 1, figs. 2-6.

Spirifer keilhavii von Buch, p. 74, figs. 2a, b.

Spiriferina keilhavii (von Buch): Wiman, 1914, pl. 2, figs. 25-30; pl. 3, fig. 1.

Spiriferina draschei (Toula): Wiman, 1914, p. 38, pl. 3, fig. 2 only.

Spiriferella keilhavii (von Buch): Frebold, 1931, p. 28, pl. 5, figs. 7-9; Grabau, 1931, p. 164, pl. 20, figs. 9a-c; pl. 21, figs. 1-5; Frebold, 1937, p. 46, pl. 11, fig. 9; Stepanov, 1937, p. 143, 179, pl. 7, figs. 8-11; Dunbar, 1955, p. 139, pl. 25, figs. 1-9; pl. 26, figs. 1-11; pl. 27, figs. 1-14; Harker, 1960, p. 72, pl. 22, figs. 9-11; pl. 23, figs. 1, 2; Gobbett, 1963, p. 152, pl. 20, figs. 8-10; Yanagida, 1963, pl. 9, figs. 4-9; pl. 10, figs. 1-7; Nelson and Johnson, 1968, p. 736, pl. 96, figs. 7, 8, 12; text-figs. 3e, 8a, 9, 13b; Koizumi, 1979, pl. 1, figs. 10, 11 only; Minato *et al.*, 1979, pl. 67, figs. 1-3; Lee *et al.*, 1980, p. 418, pl. 178, fig. 8; Tazawa and Gunji, 1982, p. 70, pl. 4, figs. 4-7; Waterhouse and Waddington, 1982, p. 28, pl. 6, figs. 3-14; text-figs. 16e, g, h, i, 19; not pl. 4, fig. 15; Lee *et al.*, 1985, p. 122, pl. 2, figs. 1a, b, 5, 8.

Spiriferella parryana (Toula): Frebold, 1937, p. 45, pl. 11, fig. 6.

Spiriferella aff. *keilhavii* (von Buch): Bamber and Waterhouse, 1971, pl. 20, fig. 7.

Material.—Five specimens: (1) external mould of a pedicle valve and internal mould of a conjoined valve, NU-B185; (2) external mould of a pedicle valve, NU-B186; (3) internal mould of a conjoined valve, NU-B187; (4) internal mould of a pedicle valve with the external mould of the posterior portion attached, NU-B188; (5) internal mould of a brachial valve, NU-B189.

Description.—Shell large size for genus, biconvex, slightly wider subquadrate in outline, with greatest width near hinge line; length about 44 mm, width about 55 mm in the best preserved pedicle valve specimen (NU-B185); length more than 45 mm, width about 60 mm in the largest pedicle valve specimen (NU-B186).

Pedicle valve gently convex in lateral profile, with maximum convexity at umbonal slope. Beak not preserved. Interarea low, broad and gently concave, with large delthyrium: delthyridial angle 55° in one specimen (NU-B188). Sulcus wide and deep, with flat bottom and two minor costae on each side of inner slopes. External surface of pedicle valve ornamented by several fairly strong costae and numerous very fine concentric lirae. Costae broad, rounded, bifurcating asymmetrically about 10-15 mm anterior to beaks, and producing fascicles of 2-3; costae numbering 5-6 on each lateral side to sulcus.

Internally, pedicle valve having a deeply impressed, large, heart-shaped muscle field and a pair of long dental plates. Adductors long and narrow. Diductors wide and weakly striated longitudinally. Internal structures of brachial valve not well-preserved and obscure.

Remarks.—These specimens are referred to *Spiriferella keilhavii* (von Buch, 1846), originally described from the Middle Permian of Mt. Misery, Bear Island, by their transverse shell and weakly fasciculated costae on the pedicle valve.

Spiriferella lita Fredericks, 1924, from the Chandalaz Formation of South Primorye (Fredericks, 1924, p. 36, pl. 1, figs. 16-27; text-fig. 2) is also a large, transverse *Spiriferella*, but the Russian species is distinguished from *S. keilhavii* by its simple costae on the pedicle valve.

Spiriferella loveni (Diener, 1903), redescribed and refigured by Waterhouse and Waddington (1982, p. 22, pl. 5, figs. 2-17; pl. 6, figs. 1, 2; text-figs. 16b, d, f, 17, 18) on the specimens from the Middle Permian of the Canadian Arctic region, is like to *S. keilhavii* in size, shape and surface ornament of the pedicle valve. *S. loveni* is distinguished from *S. keilhavii* by its high, distinct dorsal fold with a broad, deep median groove. Three brachial valve specimens from Ichinoseki, which are represented by the internal moulds, have broad but low dorsal fold with a narrow median groove or none at all.

Distribution.—Tahkandit Formation of northern Yukon Territory; Assistance Formation of Grinnell Peninsula, Devon Island, Arctic Canada; Upper Sandstone Unit (GC Zone) of Ellesmere Island, Arctic Canada; Foldvik Creek Formation, east Greenland; Kapp Starostin Formation of Spitsbergen and its equivalent of Bear Island, Svalbard; Jisu (Zhesi) Formation of Jisu and Xiujimqin, Inner Mongolia; Huanggangliang Formation of Ongniud, Inner Mongolia; Tumenling Formation of Acheng, Heilongjiang Province, Northeast China; Mizukoshi Formation of Mizukoshi, central Kyushu, southwest Japan; Kashiwadaira Formation of Takakurayama, Abukuma Mountains, northeast Japan; Oashi Formation of Soma, Abukuma Mountains, northeast Japan; Lower Kanokura Formation of Setamai and Imo, southern Kitakami Mountains, northeast Japan.

Acknowledgements

I thank Dr. K. Yoshida of the Department of Geology, Shinshu University and Dr. H. Machiyama of Japan Marine Science and Technology Center, Yokosuka for providing brachiopod specimens and for information on geology of the fossil locality.

References

- Bamber, E.W. and Waterhouse, J.B., 1971, Carboniferous and Permian stratigraphy and paleontology, northern Yukon Territory, Canada. *Bull. Canad. Petrol. Geol.*, **19**, 29-250.
- Buch, L. von, 1846, Ueber *Spirifer keilhavii*. *Abh. K. Akad. Wissenschaft. Berlin, 1846*, 65-80.
- Chi-Thuan, T., 1961, Les brachiopodes permien du Phnom-Tup (Sisophon-Cambodge). *Ann. Fac. Sci. Saigon, 1961*, 267-308.
- Chi-Thuan, T., 1962, Les brachiopodes permien de Cam-Lo (Province de Quang-Tri). *Ann. Fac. Sci. Saigon, 1962*, 485-498.
- Colani, M.M., 1919, Sur quelques fossiles Ouralo-Permien de Hongay. *Bull. Serv. Géol. l'Indochine*, **6**, 1-27.
- Cooper, G.A. and Grant, R.E., 1974, Permian brachiopods of west Texas, 2. *Smithson. Contr. Paleobiol.*, no. 15, 233-793.
- Diener, C., 1897, Himalayan fossils, vol. 1, pt. 3. The Permian carboniferous fauna of Chitichun, No. 1. *Palaeontologia Indica, Ser. 15*, **1**, pt. 3, 1-105.
- Diener, C., 1899, Himalayan fossils, vol. 1, pt. 2. Anthracolithic fossils of Kashmir and Spiti. *Palaeontologia Indica, Ser. 15*, **1**, pt. 2, 1-95.
- Diener, C., 1903, Himalayan fossils, vol. 1, pt. 5. Permian fossils of the central Himalayas. *Palaeontologia Indica, Ser. 15*, **1**, pt. 5, 1-204.
- Diener, C., 1915, The Anthracolithic faunae of Kashmir, Kanaur and Spiti. *Palaeontologia Indica, N. S.*, **5**, 1-135.
- Duan C. and Li, W., 1985, Descriptions of fossils; Phylum Brachiopoda. In Ding, Y., Xia, G., Duan, C. and Li, W., Study on the Early Permian stratigraphy and fauna in Zhesi district, Nei Mongol Zizhiqu (Inner Mongolia). *Bull. Tianjin Inst. Geol. Min. Res., Chinese Acad. Geol. Sci.*, no. 10, 99-145, 199-214. (In Chinese).
- Dunbar, C.O., 1955, Permian brachiopod faunas of central East Greenland. *Meddel. Grønland*, **110**, 1-169.
- Ehiro, M., 1989, Southern Kitakami Mountains; Permian. In Geology of Japan "Tohoku Chiho" Editorial Committee, ed., *Geology of Japan, 2. Tohoku Chiho*. Kyoritsu Shuppan, Tokyo, 23-31. (In Japanese).
- Fang, R. and Fan, J., 1994, Middle to Upper Carboniferous-Early Permian Gondwana facies and palaeontology in western Yunnan. Yunnan Sci. Tech. Press, Kunming, 121 p. (In Chinese).
- Feng, R. and Jiang, Z., 1978, Phylum Brachiopoda. In Geological and Palaeontological Team of Guizhou, ed., *Palaeontological atlas of Southwest China; Guizhou, pt. 2. Carboniferous to Quaternary*. Geol. Pub. House, Beijing, 231-305. (In Chinese).
- Frebald, H., 1931, Das marine Oberkarbon Ostgrönlands. Leitende Fauna, Altersstellung, Palaeogeographie. *Meddel. Grønland*, **84**, 1-88.
- Frebald, H., 1937, Das Festungsprofil auf Spitzbergen, 4. Die Brachiopoden- und Lamellibranchiatenfauna und die Stratigraphie des Oberkarbons und Unterperms. *Skrift. Svalbard og Ishavet*, no. 69, 1-94.
- Frech, F., 1911, Die Dyas. In Richthofen, F. von, ed., *China, Fünfter Band*, Dietrich Reimer, Berlin, 103-137.
- Fredericks, G., 1916, The palaeontological notes, 2. On some Upper Palaeozoic Brachiopoda of Eurasia. *Mém. Com. Géol., N. S.*, **156**, 1-87. (In Russian).

- Fredericks, G., 1924, Upper Paleozoic of the Ussuriland, 1. Brachiopoda. *Mat. po Geol. Pol. Isk. Dalnego Vostoka*, no. 28, 1-52. (In Russian).
- Gobbett, D.J., 1963, Carboniferous and Permian brachiopods of Svalbard. *Norsk Polarinst. Skrift.*, no. 127, 1-201.
- Grabau, A.W., 1931, The Permian of Mongolia. In Reeds, C.A., ed., *Natural History of Central Asia*, vol. 4. Amer. Mus. Nat. Hist., New York, 665 p.
- Grant, R.E., 1970, Brachiopods from Permian-Triassic boundary beds and age of Chhidru Formation, West Pakistan. In Kummel, B. and Teichert, C., eds., *Stratigraphic boundary problems: Permian and Triassic of West Pakistan*. University of Kansas Press, Lawrence, 117-151.
- Grant, R.E., 1976, Permian brachiopods from southern Thailand. *Jour. Paleontology*, **50**, Supplement, 1-269.
- Grunt, T.A. and Dmitriev, V.Yu., 1973, Permian Brachiopoda of the Pamir. *Tr. Paleont. Inst.*, **136**, 1-212. (In Russian).
- Hamlet, B., 1928, Permische Brachiopoden, Lamellibranchiaten und Gastropoden von Timor. *Jaar. Mijnw. Ned.-Indie*, **56**, 1-115.
- Harker, P., 1960, Corals, brachiopods and molluscs of Grinnell Peninsula. In Harker, P. and Thorsteinsson, R., Permian rocks and faunas of Grinnell Peninsula, Arctic Archipelago. *Geol. Surv. Canada, Memoir*, **309**, 39-79.
- Hayasaka, I., 1917, On the brachiopod genus *Lyttonia* with several Japanese and Chinese examples. *Jour. Geol. Soc. Tokyo*, **24**, 43-53.
- Hayasaka, I., 1922a, Some Permian brachiopods from the Kitakami Mountains. *Japan. Jour. Geol. Geogr.*, **1**, 51-70.
- Hayasaka, I., 1922b, Paleozoic Brachiopoda from Japan, Korea and China. *Sci. Rep., Tohoku Imp. Univ., 2nd ser.*, **6**, 1-116.
- Hayasaka, I., 1960, On the occurrence of *Neospirifer fasciger* (Keyserling) in Japan, and a note on some associate Permian brachiopods from around Kesennuma City, northeast Japan. *Coll. Essays Comm. 10th Anniv. Shimane Univ.*, 34-57.
- Huang, T.K., 1932, Late Permian Brachiopoda of southwestern China. *Palaeontologia Sinica, Ser. B*, **9**, fasc. 1, 1-139.
- Huang, T.K., 1933, Late Permian Brachiopoda of southwestern China, pt. 2. *Palaeontologia Sinica, Ser. B*, **9**, fasc. 2, 1-172.
- Huang, T.K., 1936, On the occurrence of *Lyttonia* in the Wolfcamp Series of the Glass Mountains of Texas with notes on lyttonids from southwestern China. *Bull. Geol. Soc. China*, **15**, 489-493.
- Jin, Y., Ye, S., Xu, H. and Sun, D., 1979, Phylum Brachiopoda. In Nanjing Institute of Geology and Palaeontology, Academia Sinica and Qinghai Institute of Geology, eds., *Palaeontological atlas of Northwest China; Qinghai volume, pt. 1*. Geol. Pub. House, Beijing, 60-217. (In Chinese).
- Jing, Y. and Hu, S., 1978, Brachiopods of the Kuhfeng Formation in south Anhui and Nanking Hills. *Acta Palaeont. Sinica*, **17**, 101-127. (In Chinese).
- Jing, Y. and Sun, D., 1981, Palaeozoic brachiopods from Xizang. In Nanjing Institute of Geology and Palaeontology, Academia Sinica, ed., *The series of the Scientific Expedition to the Qinghai-Xizang Plateau; Palaeontology of Xizang, Book 3*, Sci. Press, Beijing, 127-176. (In Chinese).
- Kayser, E., 1883, Obercarbonische Fauna von Lo-Ping. In Richthofen, F. von, ed., *China, Vierter Band*, Dietrich Reimer, Berlin, 160-208.
- King, W., 1846, Remarks on certain genera belonging to the class Palliobranchiata. *Ann. Mag. Nat. Hist.*, **18**, 26-42.
- Koizumi, H., 1979, Permian brachiopods from Takakura-yama Formation and its geological age, N. E. Japan. *Bull. Taira Chigaku Dokokai*, Spec. vol., 1-3. (In Japanese).
- Kotljars, G.V. and Zakharov, Yu. D., 1989, *Evolution of the latest Permian biota; Midian regional stage in the USSR*. Nauka, Leningrad, 182 p. (In Russian).
- Lee, L. and Gu, F., 1976, Carboniferous and Permian Brachiopoda. Geological Bureau of Nei

- Mongol and Geological Institute of Northeast China, eds., *Palaeontological atlas of Northeast China; Nei Mongol, pt. 1. Palaeozoic volume*. Geol. Pub. House, Beijing, 228-306. (In Chinese).
- Lee, L., Gu, F. and Li, W., 1985, *Spiriferella* and *Spiriferelloides* (Brachiopoda) from the Lower Permian of Xi Ujimqin Qi region, Inner Mongolia. *Prof. Pap. Stratigraphy and Palaeontology*, no. 12, 121-139. (In Chinese).
- Lee, L., Gu, F. and Su, Y., 1980, Carboniferous and Permian Brachiopoda. In Shenyang Institute of Geology and Mineral Resources, ed., *Palaeontological atlas of Northeast China, pt. 1. Palaeozoic volume*. Geol. Pub. House, Beijing, 327-428. (In Chinese).
- Liang, W., 1990, Lengwu Formation of Permian and its brachiopod fauna in Zhejiang Province. *Geol. Mem. Minist. Geol. Min. Res., P. R. China, Ser. 2*, no. 10, 1-522. (In Chinese).
- Liao, Z., 1980, Upper Permian brachiopods from western Guizhou. In Nanjing Institute of Geology and Palaeontology, Academia Sinica, ed., *Stratigraphy and palaeontology of Upper Permian coal-bearing formations in western Guizhou and eastern Yunnan*. Sci. Press, Beijing, 241-277. (In Chinese).
- Liao, Z. and Meng, F., 1986, Late Chanxsingian brachiopods from Huatang of Xian County, southern Hunan. *Mem. Nanjing Inst. Geol. Palaeont., Acad. Sinica*, no. 22, 71-94. (In Chinese).
- Licharew, B.K., 1932, Fauna of the Permian deposits of northern Caucasus, 2. Brachiopoda; Family Lyttoniidae Waagen. *Trans. United Geol. Prospect. Serv. USSR*, fasc. 215, 55-111. (In Russian).
- Licharew, B.K. and Kotljarskiy, G.V., 1978, Permskie brachiopody Yuzhnogo Primorya. In Popeko, L.I., ed., *Verkhniy Paleozoy Severo-Vostochnoy Azii*, Dalnevostochniy Nauchniy Chentr, Akad. Nauk SSSR, Vladivostok, 63-75. (In Russian).
- Liu, Z., Tan, Z. and Ding, Y., 1982, Phylum Brachiopoda. In Geological Bureau of Hunan, ed., *The palaeontological atlas of Hunan*. Geol. Pub. House, Beijing, 172-216. (In Chinese).
- Machiyama, H. and Yoshida, K., 1995, Bio- and lithofacies of the limestone block in the Middle Permian Usuginu Conglomerate, South Kitakami Terrane, northeast Japan. *Abstract of 102th Ann. Meeting, Geol. Soc. Japan*, 189. (In Japanese).
- Mansuy, H., 1912, Mission du Laos, 1. Géologie des environs de Luang-Prabang, *Mém. Serv. Géol. l'Indochine*, **1**, 1-32.
- Mansuy, H., 1913, Faunes des Calcaires a Productus de l'Indochine, Première série. *Mém. Serv. Géol. l'Indochine*, **2**, 1-132.
- Mansuy, H., 1914, Faunes des Calcaires a Productus de l'Indochine, Deuxième série. *Mém. Serv. Géol. l'Indochine*, **3**, 1-59.
- Mashiko, K., 1934, Discovery of *Lytonia* in a limestone exposed at Takauti, Nakayakuno-mura, Amata-gun, Kyoto Prefecture. *Japan. Jour. Geol. Geogr.*, **11**, 181-183.
- Minato, M., Hunahashi, M., Watanabe, J. and Kato, M., 1979, *Variscan geohistory of northern Japan: The Abean Orogeny*. Tokai Univ. Press, Tokyo, 427 p.
- Minato, M., Kato, M., Nakamura, K., Hasegawa, Y., Choi, D.R. and Tazawa, J., 1978, Biostratigraphy and correlation of the Permian of Japan. *Jour. Fac. Sci., Hokkaido Univ., Ser. 4*, **18**, 11-47.
- Nelson, S.J. and Johnson, C.E., 1968, Permo-Pennsylvanian brachithyrid and horridonid brachiopods from the Yukon Territory, Canada. *Jour. Paleontology*, **42**, 715-746.
- Noetling, F., 1904, Ueber den Bau und die Organisation der Lyttoniidae Waagen. *Verhandl. Deut. Zool. Gesell.*, 1904, 103-122.
- Noetling, F., 1905, Untersuchungen über die Familie Lyttoniidae Waag. emend. Noetling. *Palaeontographica*, **51**, 129-154.
- Osawa, M., Nagura, H., Tazawa, J. and Mori, K., 1981, Geology of the Nagasaka district, southern Kitakami Mountains—On the boundaries of Devonian, Carboniferous and Permian—. *Abstract of 88th Ann. Meeting, Geol. Soc. Japan*, 177. (In Japanese).
- Reed, F.R.C., 1944, Brachiopoda and Mollusca from the Productus Limestones of the Salt Range. *Palaeontologia Indica, N. S.*, **23**, 1-596.
- Ruzhentsev, V.E. and Sarytcheva, T.G., 1965, Razvitiye i smena morskikh organizmov na rubezhe Paleozoya i Mesozoya. *Tr. Paleont. Inst.*, **108**, 1-431. (In Russian).

- Sarytcheva, T.G., 1964, Oldhaminid brachiopods from the Permian of Transcaucasia. *Paleontologicheskii Zhurnal*, 1964, no. 3, 58-72. (In Russian).
- Schréter, Z., 1963, Die Brachiopoden aus dem oberen Perm des Bükk-Gebirges in Nordungarn. *Geologica Hungarica, Ser. Palaeontologica*, **28**, 79-179.
- Shen, S., He, X. and Zhu, M., 1992, Changxingian brachiopods from Zhongliang Hill of Chongqing, Sichuan Province. In Editorial Committee of Stratigraphy and Palaeontology of Oil and Gas Bearing Areas in China, ed., *The symposium on stratigraphy and palaeontology of Oil and Gas Bearing Areas in China (3)*. Petrol. Indust. Press, 171-218. (In Chinese).
- Shimizu, D., 1961, Brachiopod fossils from the Permian Maizuru Group. *Mem. Coll. Sci., Univ. Kyoto, Ser. B*, **27**, 309-350.
- Simic, V., 1933, Gornji Perm u zapadnoj Sibiji: Das Oberperm in Westserbien. *Raspr. Geol. Inst. Kralj. Jugoslavije*, **1**, 1-130.
- Sremac, J., 1986, Middle Permian brachiopods from the Velebit Mts. (Croatia, Yugoslavia). *Palaeontologia Jugoslavica*, **35**, 1-43.
- Stepanov, D.L., 1937, Permskie brachiopod Spitsbergena. *Tr. Arkt. Inst.*, **76**, 105-192. (In Russian).
- Tazawa, J., 1976, The Permian of Kesenuma, Kitakami Mountains: A preliminary report. *Earth Science (Chikyu Kagaku)*, **30**, 175-185.
- Tazawa, J., 1987, Permian brachiopod faunas of Japan and their palaeobiogeography. *Gekkan Chikyu*, **9**, 252-255. (In Japanese).
- Tazawa, J., 1991, Middle Permian brachiopod biogeography of Japan and adjacent regions in East Asia. In Ishii, K., Liu, X., Ichikawa, K. and Huang, B., eds., *Pre-Jurassic geology of Inner Mongolia, China: Report of China-Japan Cooperative Research Group, 1987-1989*. Matsuya Insatsu, Osaka, 213-230.
- Tazawa, J., 1992, Middle Permian brachiopod faunas in East Asia and their zoogeographic significance. *Jour. Geol. Soc. Japan*. **98**, 483-496. (In Japanese).
- Tazawa, J., 1996, The Permian System of the South Primorye region, Far East Russia: Comparison with the Permian of the South Kitakami and Hida Gaien Belts, Japan. *Ann. Rep., Inst. Indust. Geol. Sci.*, no. 7, 37-47. (In Japanese).
- Tazawa, J., 1997, The Permian System of Northeast China and Inner Mongolia: Comparison with the Permian of the South Kitakami and Hida Gaien Belts, Japan. *Ann. Rep., Inst. Indust. Geol. Sci.*, no. 8, 135-145. (In Japanese).
- Tazawa, J. and Gunji, Y., 1982, Middle Permian brachiopods from the Oashi Formation, Abukuma Mountains, northeast Japan. *Saito Ho-on Kai Mus. Nat. Hist., Res. Bull.*, no. 50, 67-74.
- Tazawa, J. and Matsumoto, T., 1998, Middle Permian brachiopods from the Oguradani Formation, Ise district, Hida Gaien Belt, central Japan. *Sci. Rep., Niigata Univ., Ser. E*, no. 12, 1-17.
- Termier, H. and Termier, G., 1960, Contribution á la classification des Brachiopodes: le lophophore des Collolophides nov. ord.; Appendice. Les Oldhaminidés du Cambodge. *Soc. Géol. France, Bull., Sér. 7*, **1**, 233-243.
- Thomas, G.A., 1957, Oldhaminid brachiopods in the Permian of northern Australia. *Jour. Palaeont. Soc. India*, **2**, 174-182.
- Tong, Z., 1978, Phylum Brachiopoda; Carboniferous and Permian. In Geological Institute of Southwest China, ed., *Palaeontological atlas of Southwest China; Sichuan, pt. 2. Carboniferous to Mesozoic*. Geol. Pub. House, Beijing, 210-267. (In Chinese).
- Tschernyschew, Th., 1902, Die obercarbonische Brachiopoden des Ural und des Timan. *Mém. Com. Géol.*, **16**, 1-749. (In Russian).
- Tschernyschew, Th., 1914, Die Fauna des oberpalaeozoischen Ablagerngen des Darvas, Lf. 1. *Mém. Com. Géol., N. S.*, **104**, 1-66. (In Russian).
- Waagen, W., 1883, Salt Range fossils, 1. Productus-Limestone fossils. *Palaeontologia Indica, Ser. 13*, **1**, 391-546.
- Wang, G., Liu, Q., Jin, Y., Hu, S., Liang, W. and Liao, Z., 1982, Phylum Brachiopoda. In Nanjing Institute of Geology and Palaeontology, Academia Sinica, ed., *Palaeontological atlas of East*

- China, pt. 2. Late Palaeozoic volume. Geol. Pub. House, Beijing, 186-256. (In Chinese).
- Wanner, J. and Sieverts, H., 1935, Zur Kenntnis der permischen Brachiopoden von Timor, 1. Lytoniidae und ihre biologische und stammesgeschichtliche Bedeutung. *Neu. Jahr. Min. Geol. Palaeont., Ser. B*, **74**, 201-281.
- Waterhouse, J.B., 1968, The classification and descriptions of Permian Spiriferida (Brachiopoda) from New Zealand. *Palaeontographica, Abt. A*, **129**, 1-94.
- Waterhouse, J.B. and Piyasin, S., 1970, Mid-Permian brachiopods from Khao Phrik, Thailand. *Palaeontographica, Abt. A*, **135**, 83-197.
- Waterhouse, J.B. and Waddington, J., 1982, Systematic descriptions, paleoecology and correlations of the Late Paleozoic subfamily Spiriferellinae (Brachiopoda) from the Yukon Territory and the Canadian Arctic Archipelago. *Geol. Soc. Canada, Bull.*, **289**, 1-73.
- Wiman, C., 1914, Über die Karbonbrachiopoden Spitzbergens und Beeren Eilands. *Nova Acta Regiae Soc. Sci. Upsaliensis, Ser. 4*, **3**, 1-91.
- Xu, G., 1987, Systematic descriptions; Brachiopoda. In Yang, Z., Yin, H., Wu, S., Yang, F., Ding, M., Xu, G. et al., Permian-Triassic boundary stratigraphy and fauna of South China. *Minist. Geol. Min. Res., P. R. China, Geol. Mem., Ser. 2*, no. 6, 215-235, 317-326. (In Chinese).
- Yabe, H., 1900, The brachiopod *Lytonia* from Rikuzen Province. *Jour. Geol. Soc. Tokyo*, **7**, 1-4.
- Yanagida, J., 1963, Brachiopods from the Upper Permian Mizukoshi Formation, central Kyushu. *Mem. Fac. Sci., Kyushu Univ., Ser. D*, **14**, 69-78.
- Yanagida, J., 1970, Permian brachiopods from Khao Phrik, near Rat Buri, Thailand. *Geology and Palaeontology of Southeast Asia*, **8**, 69-96.
- Yanagida, J., 1996, Permian brachiopods from the Tsunemori Formation, SW Japan, and their paleobiogeographic implication. In Copper, P. and Jin, J., eds., *Brachiopods*. A.A. Balkema, Rotterdam, 313-315.
- Yang, D., 1984, Systematic description of palaeontology: Brachiopoda. In Yichang Institute of Geology and Mineral Resources, ed., *Biostratigraphy of the Yangtze Gorge area, vol. 3*. Geol. Pub. House, Beijing, 203-239. (In Chinese).
- Yang, D., Ni, S., Chang, M. and Zhao, R., 1977, Phylum Brachiopoda. In Hubei Geological Institute et al., eds., *Palaeontological atlas of Mid-South China, pt. 2. Late Palaeozoic*. Geol. Pub. House, Beijing, 303-470. (In Chinese).
- Yoshida, K. and Machiyama, H., 1998, Middle Permian coarse clastics in the western marginal area of the South Kitakami Terrane, northeast Japan. *Jour. Geol. Soc. Japan*, **104**, 71-89. (In Japanese).
- Zhan, L., 1979, Descriptions of fossils; Brachiopoda. In Hou, H., Zhan, L., Chen, B. and others, *The coal-bearing strata and fossils of Late Permian from Guangtung*. Geol. Pub. House, Beijing, 61-100. (In Chinese).
- Zhan, L. and Wu, R., 1982, Early Permian brachiopods from Xainza district, Xizang (Tibet). In CGQXP Editorial Committee, Ministry of Geology and Mineral Resources, P. R. China, ed., *Contribution to the geology of the Qinghai-Xizang (Tibet) Plateau, vol. 7*. Geol. Pub. House, Beijing, 86-109. (In Chinese).
- Zhang, Y., 1996, Faunal characteristics; Brachiopods. In Xia, G., Ding, Y., Ding, H., Zhang, W., Zhang, Y., Zhao, Z. and Yang, F., *On the Carboniferous-Permian boundary stratotype in China*. Geol. Pub. House, Beijing, 89-94. (In Chinese).
- Zhang, Y., Fu, L., Ding, P. and Qi, W., 1983, Phylum Brachiopoda. In Xian Institute of Geology and Mineral Resources, ed., *Palaeontological atlas of Northwest China, Shaanxi, Gansu and Ningxia volume, pt. 2. Upper Palaeozoic*. Geol. Pub. House, Beijing, 244-425. (In Chinese).
- Zhu, T., 1990, *The Permian coal-bearing strata and palaeobiocoenosis of Fusian*. Geol. Pub. House, Beijing, 127 p. (In Chinese).
- Ziegler, A.M., Hulver, M.L. and Rowley, D.B., 1996, Permian world topography and climate. In Martini, I.P., ed., *Late glacial and postglacial environmental changes—Quaternary, Carboniferous-Permian and Proterozoic*. Oxford Univ. Press, New York, 1-37.

Explanation of Plate 1

(Natural size unless otherwise indicated)

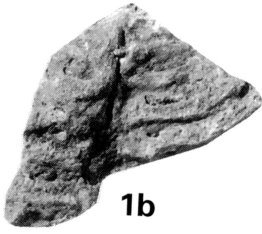
Figs. 1a, b. *Leptodus* sp.

Internal mould of pedicle valve, NU-B190, (1b×2).

Figs. 2-6. *Spiriferella keilhavii* (von Buch)

2. Latex cast of pedicle valve, NU-B186, 3a, b. Internal mould of conjoined valve, ventral and dorsal views, NU-B187, 4a, b. External mould and latex cast of pedicle valve, NU-B188, 5a, b, c. Internal mould and latex cast of pedicle valve, and internal mould of bracial valve, NU-B185.

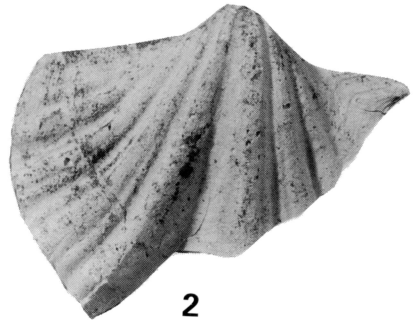
Plate 1



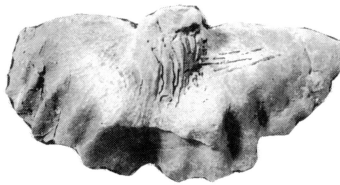
1b



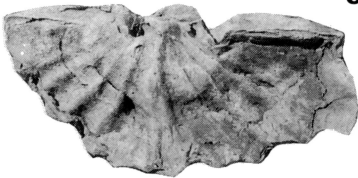
1a



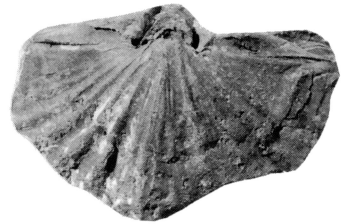
2



3a



3b



6



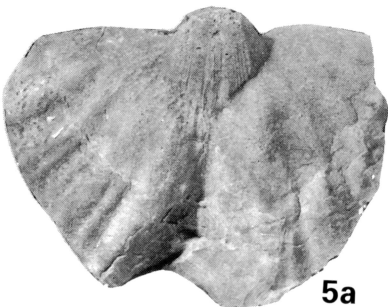
4a



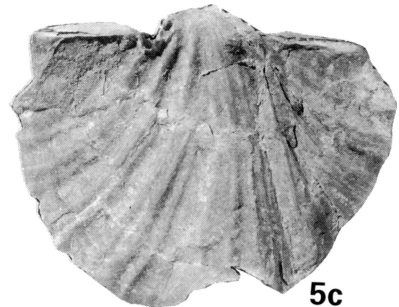
5b



4b



5a



5c